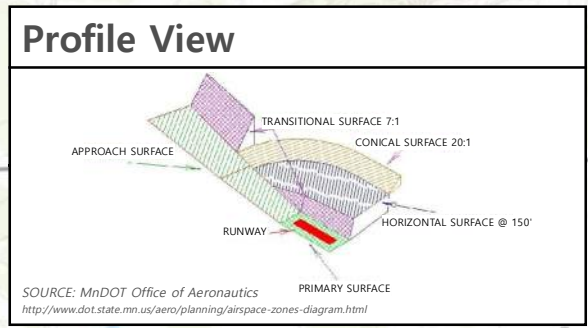


### Runway End Details

Runway	Coordinates
Runway 13	N45° 57' 09.42" W94° 21' 03.99"
Runway 31	N45° 56' 42.64" W94° 20' 20.93"
EX. Rwy 18	N45° 57' 13.84" W94° 20' 55.39"
EX. Rwy 36	N45° 56' 45.65" W94° 21' 02.66"
FUT. Rwy 18	N45° 57' 10.87" W94° 20' 58.43"
FUT. Rwy 36	N45° 56' 42.68" W94° 20' 59.49"



- Approach Surface
- Conical Surface
- Horizontal Surface
- Primary Surface
- Transitional Surface
- Airport Boundary
- Municipal Boundary

0 750 1,500 3,000 FEET

SOURCE: ESRI IMAGERY, MORRISON COUNTY

# B1: Existing/Future Airspace Zoning Map

Little Falls/Morrison County Airport

PROJ. NO. 16909  
 DATE: JANUARY 2, 2019

Engineering  
 Architecture  
 Planning

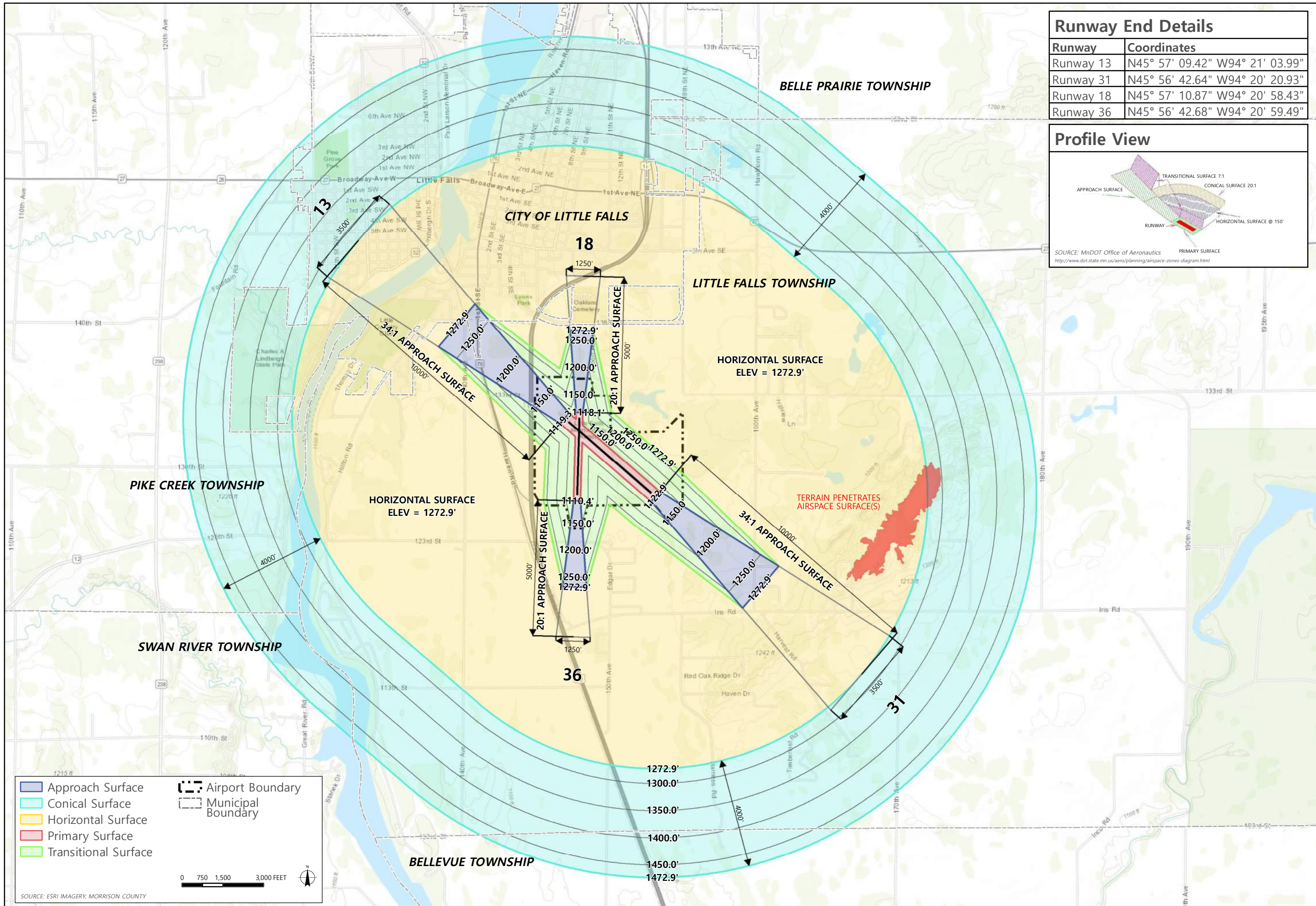
**TKDA**

444 Cedar Street, Suite 1500  
 Little Falls, MN 55101  
 651-824-0000  
 tkda.com

CITY OF Little Falls

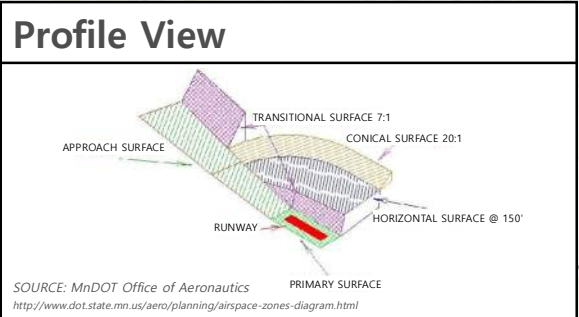
MORRISON COUNTY  
 "HOME OF LINDBERGH"





### Runway End Details

Runway	Coordinates
Runway 13	N45° 57' 09.42" W94° 21' 03.99"
Runway 31	N45° 56' 42.64" W94° 20' 20.93"
Runway 18	N45° 57' 10.87" W94° 20' 58.43"
Runway 36	N45° 56' 42.68" W94° 20' 59.49"



- Approach Surface
- Conical Surface
- Horizontal Surface
- Primary Surface
- Transitional Surface
- Airport Boundary
- Municipal Boundary

0 750 1,500 3,000 FEET

SOURCE: ESRI IMAGERY, MORRISON COUNTY

Engineering  
Architecture  
Planning

**TKDA**

444 Cedar Street, Suite 1500  
 Little Falls, MN 55101  
 612.324.1000  
 tkda.com

**CITY OF Little Falls**

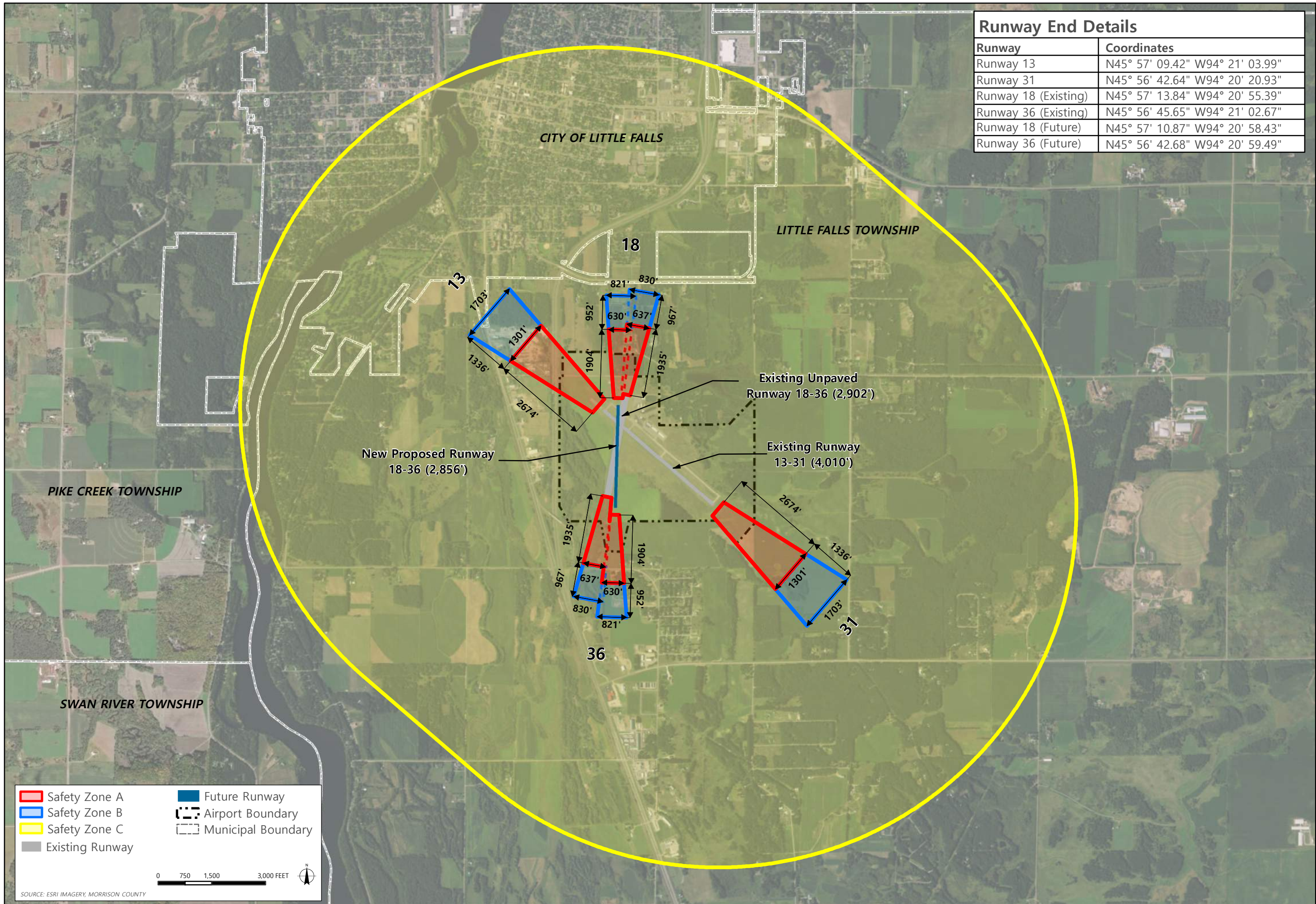
**MORRISON COUNTY**  
 "HOME OF LINDBERGH"

# B2: Future Airspace Zoning Map

Little Falls/Morrison County Airport

PROJ. NO. 16909  
 DATE: JANUARY 2, 2019





Runway End Details	
Runway	Coordinates
Runway 13	N45° 57' 09.42" W94° 21' 03.99"
Runway 31	N45° 56' 42.64" W94° 20' 20.93"
Runway 18 (Existing)	N45° 57' 13.84" W94° 20' 55.39"
Runway 36 (Existing)	N45° 56' 45.65" W94° 21' 02.67"
Runway 18 (Future)	N45° 57' 10.87" W94° 20' 58.43"
Runway 36 (Future)	N45° 56' 42.68" W94° 20' 59.49"

Safety Zone A	Future Runway
Safety Zone B	Airport Boundary
Safety Zone C	Municipal Boundary
Existing Runway	

0 750 1,500 3,000 FEET

SOURCE: ESRI IMAGERY, MORRISON COUNTY

# B3: Existing Land Use Zoning Map

Little Falls/Morrison County Airport

PROJ. NO. 16909  
DATE: FEBRUARY 11, 2019

Engineering  
Architecture  
Planning

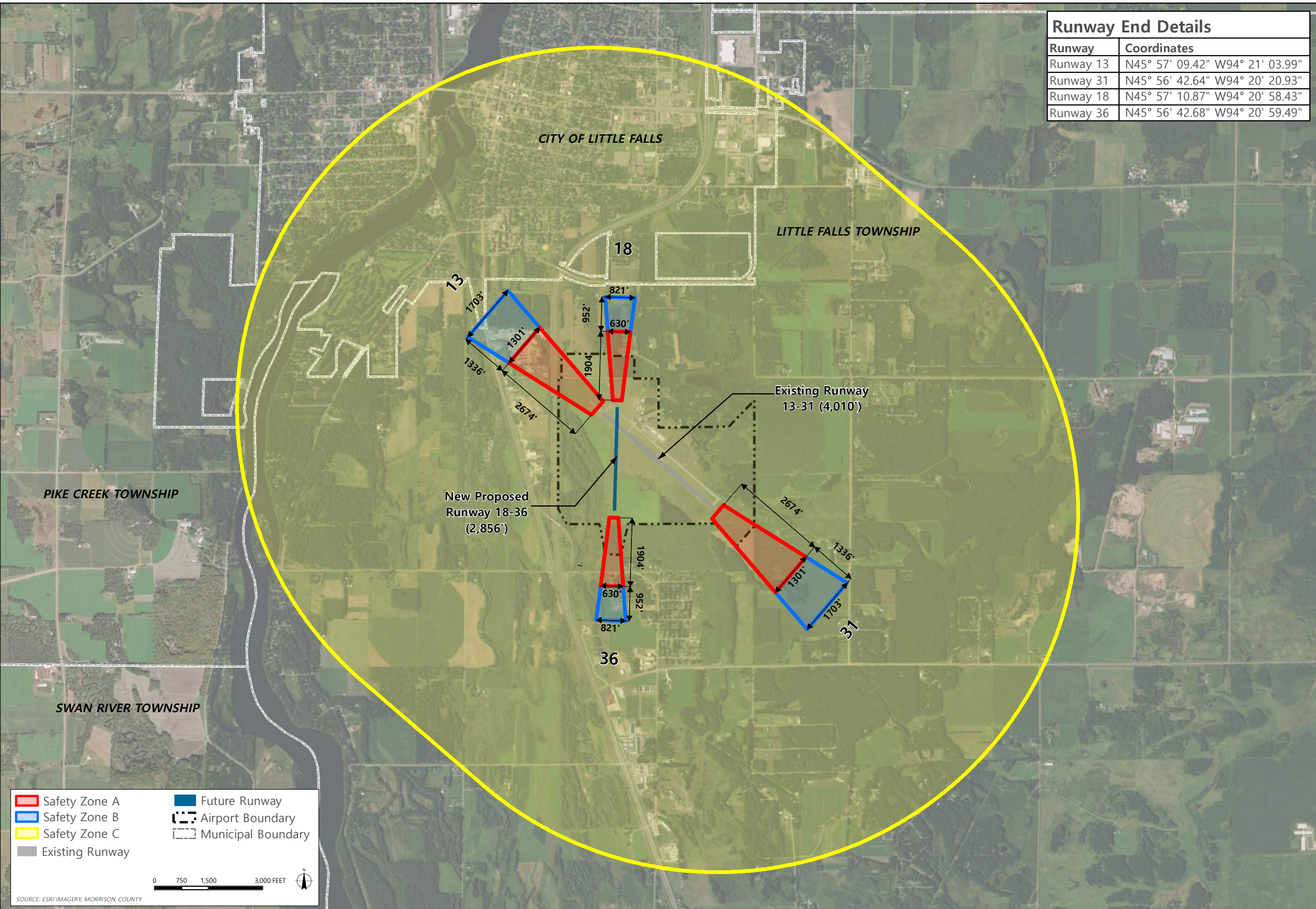
444 Cedar Street, Suite 1000  
Little Falls, MN 55101  
612.821.1100  
teda.com

TKDA

CITY OF Little Falls

MORRISON COUNTY  
"HOME OF LINDBERGH"





Runway End Details	
Runway	Coordinates
Runway 13	N45° 57' 09.42" W94° 21' 03.99"
Runway 31	N45° 56' 42.64" W94° 20' 20.93"
Runway 18	N45° 57' 10.87" W94° 20' 58.43"
Runway 36	N45° 56' 42.68" W94° 20' 59.49"

Safety Zone A	Future Runway
Safety Zone B	Airport Boundary
Safety Zone C	Municipal Boundary
Existing Runway	

0 750 1,500 3,000 FEET

SOURCE: ESRI IMAGERY, MORRISON COUNTY

Engineering  
Architecture  
Planning

444 Cedar Street, Suite 1000  
Little Falls, MN 55101  
651.821.1000  
teda.com

**TKDA**

CITY OF Little Falls

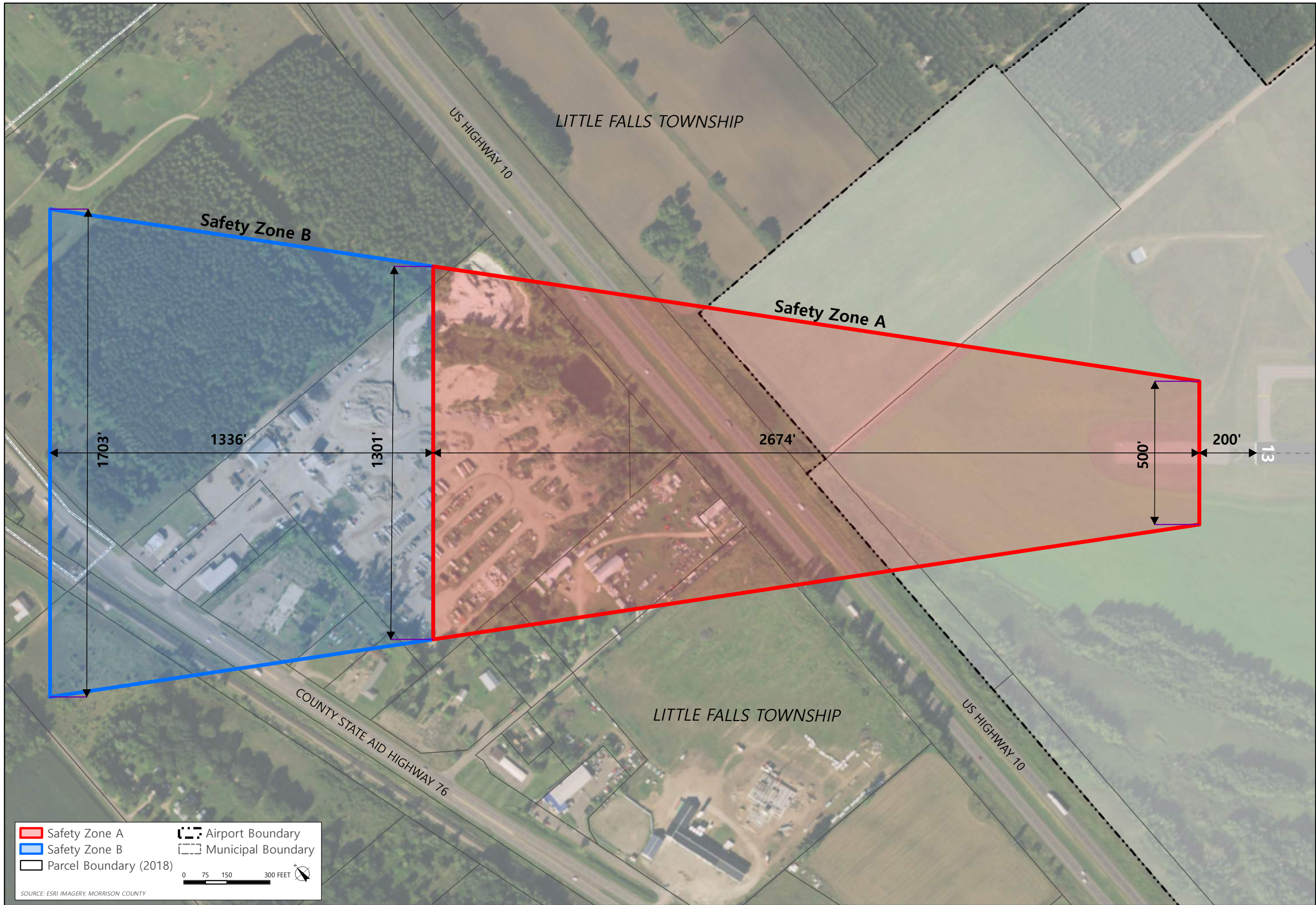
MORRISON COUNTY  
"HOME OF LINDBERGH"

# B4: Future Land Use Zoning Map

Little Falls/Morrison County Airport

PROJ. NO. 16909  
DATE: FEBRUARY 11, 2019





	Safety Zone A		Airport Boundary
	Safety Zone B		Municipal Boundary
	Parcel Boundary (2018)		

0 75 150 300 FEET

SOURCE: ESRI IMAGERY, MORRISON COUNTY

# B5: Runway 13 Land Use Zoning Detail

Little Falls/Morrison County Airport

PROJ. NO. 16909  
DATE: JANUARY 2, 2019

Engineering  
Architecture  
Planning

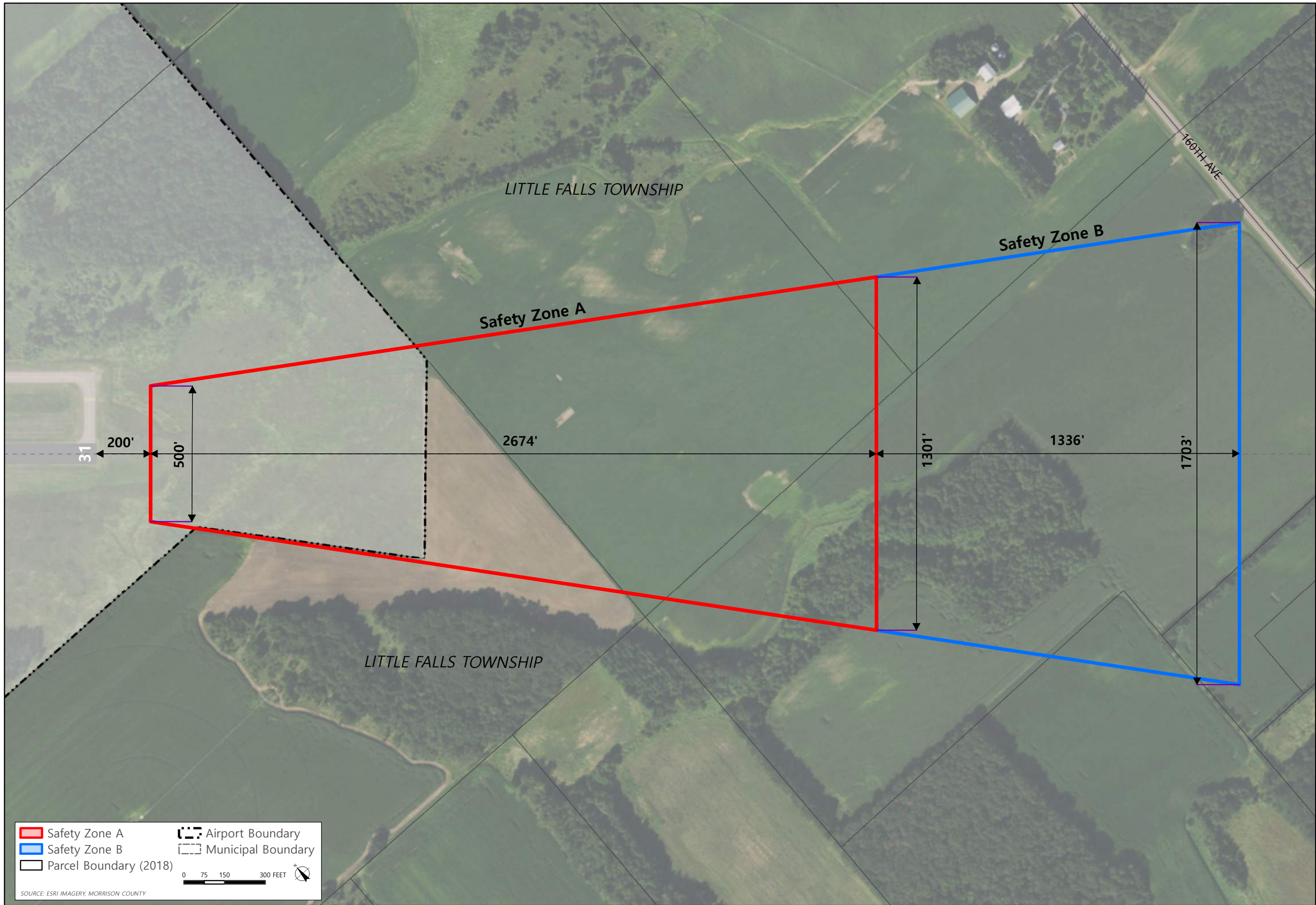
444 Cedar Street, Suite 1000  
Little Falls, MN 55101  
612.821.1100  
tkda.com

**TKDA**

CITY OF Little Falls

MORRISON COUNTY  
"HOME OF LINDBERGH"





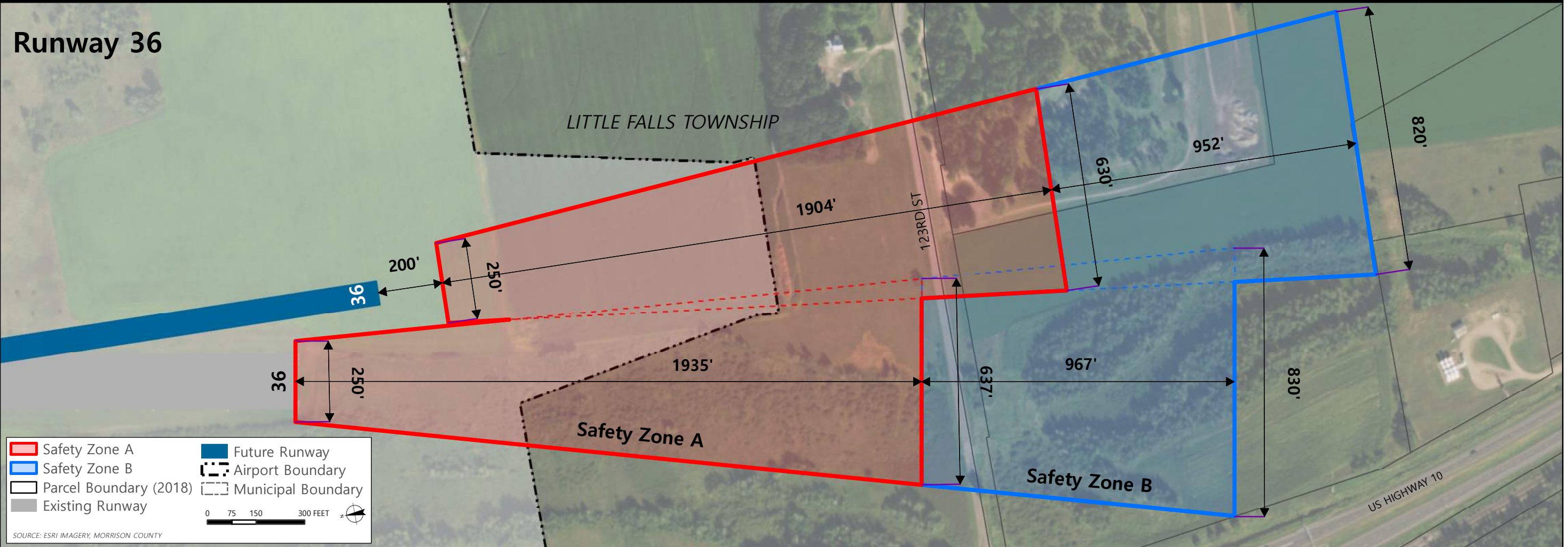
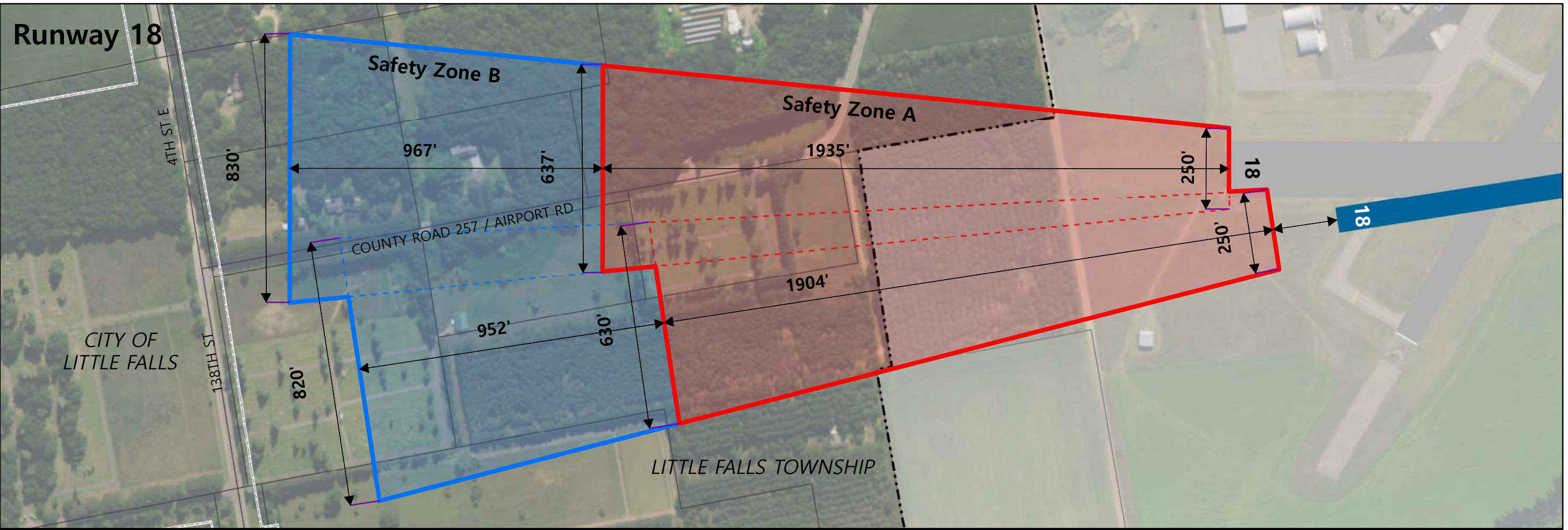
# B6: Runway 31 Land Use Zoning Detail

Little Falls/Morrison County Airport

PROJ. NO. 16909

DATE: JANUARY 2, 2019





	Safety Zone A		Future Runway
	Safety Zone B		Airport Boundary
	Parcel Boundary (2018)		Municipal Boundary
	Existing Runway		

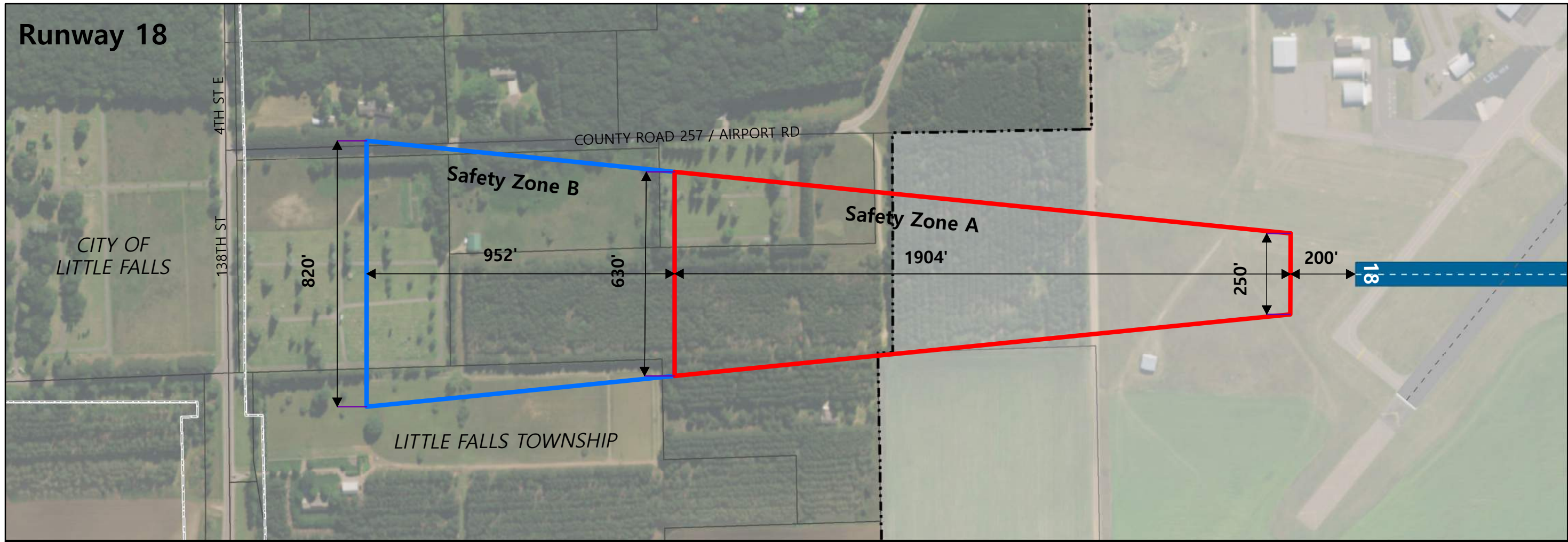
0 75 150 300 FEET

SOURCE: ESRI IMAGERY, MORRISON COUNTY

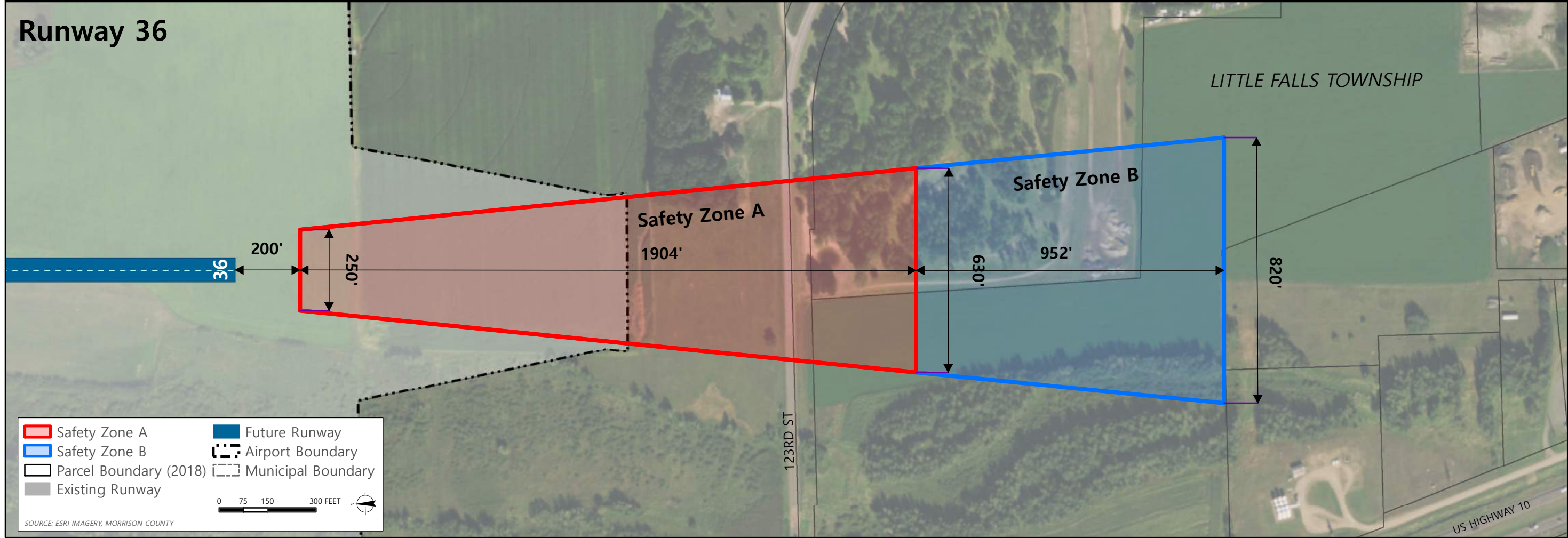
**B7: Existing Runway 18/36 Land Use Zoning Detail**  
Little Falls/Morrison County Airport



# Runway 18



# Runway 36



Safety Zone A	Future Runway
Safety Zone B	Airport Boundary
Parcel Boundary (2018)	Municipal Boundary
Existing Runway	

0 75 150 300 FEET

SOURCE: ESRI IMAGERY, MORRISON COUNTY

Engineering  
Architecture  
Planning  
444 Cedar Street, Suite 1000  
Little Falls, MN 55101  
612.824.1000  
tkda.com

CITY OF  
Little Falls

MORRISON COUNTY  
"HOME OF LINDBERGH"

## B8: Future Runway 18/36 Land Use Zoning Detail

Little Falls/Morrison County Airport

PROJ. NO. 16909  
DATE: JANUARY 2, 2019